

1 Description

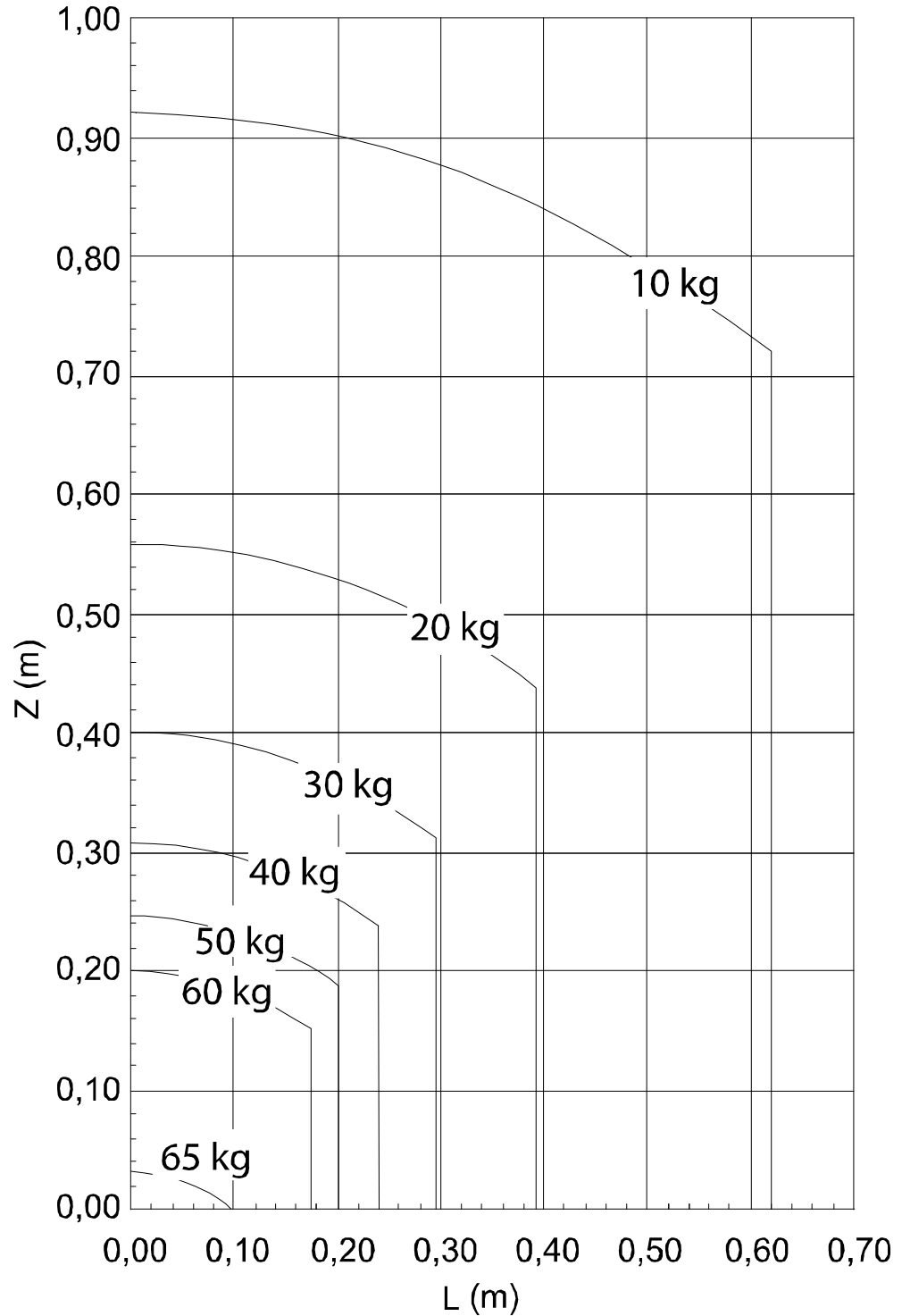
1.5.2 Load diagrams

1.5.2 Load diagrams



武永康
13913235524
(微信同号)

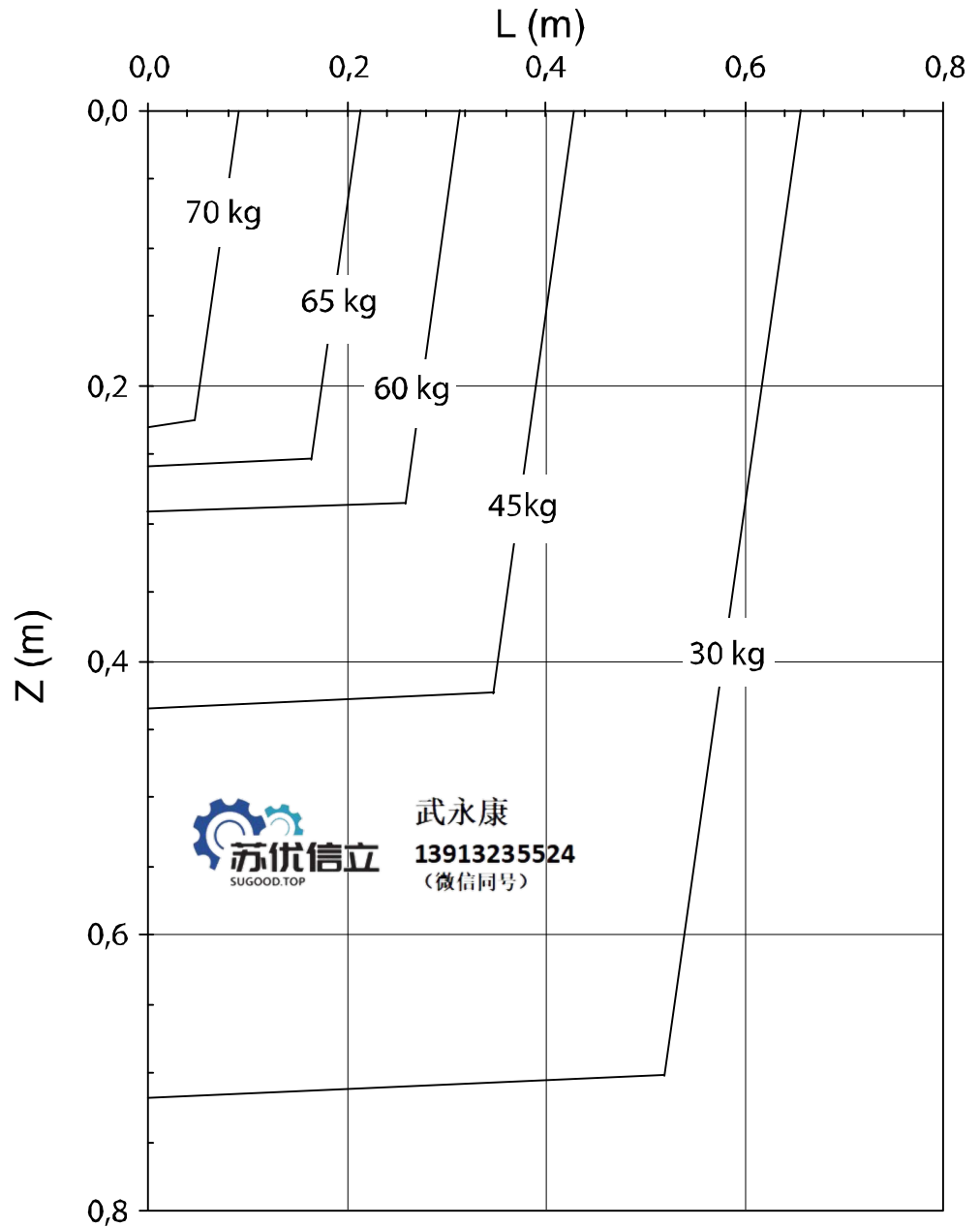
IRB 4600 - 60/2.05



xx0800000448

Continues on next page

IRB 4600 - 60/2.05 "Vertical wrist" (+-10)



xx090000070

For wrist down (0 deviation from the vertical line).

	Description
Max load	73 kg
Z _{max}	0,216 m
L _{max}	0,028 m

Continues on next page

1 Description

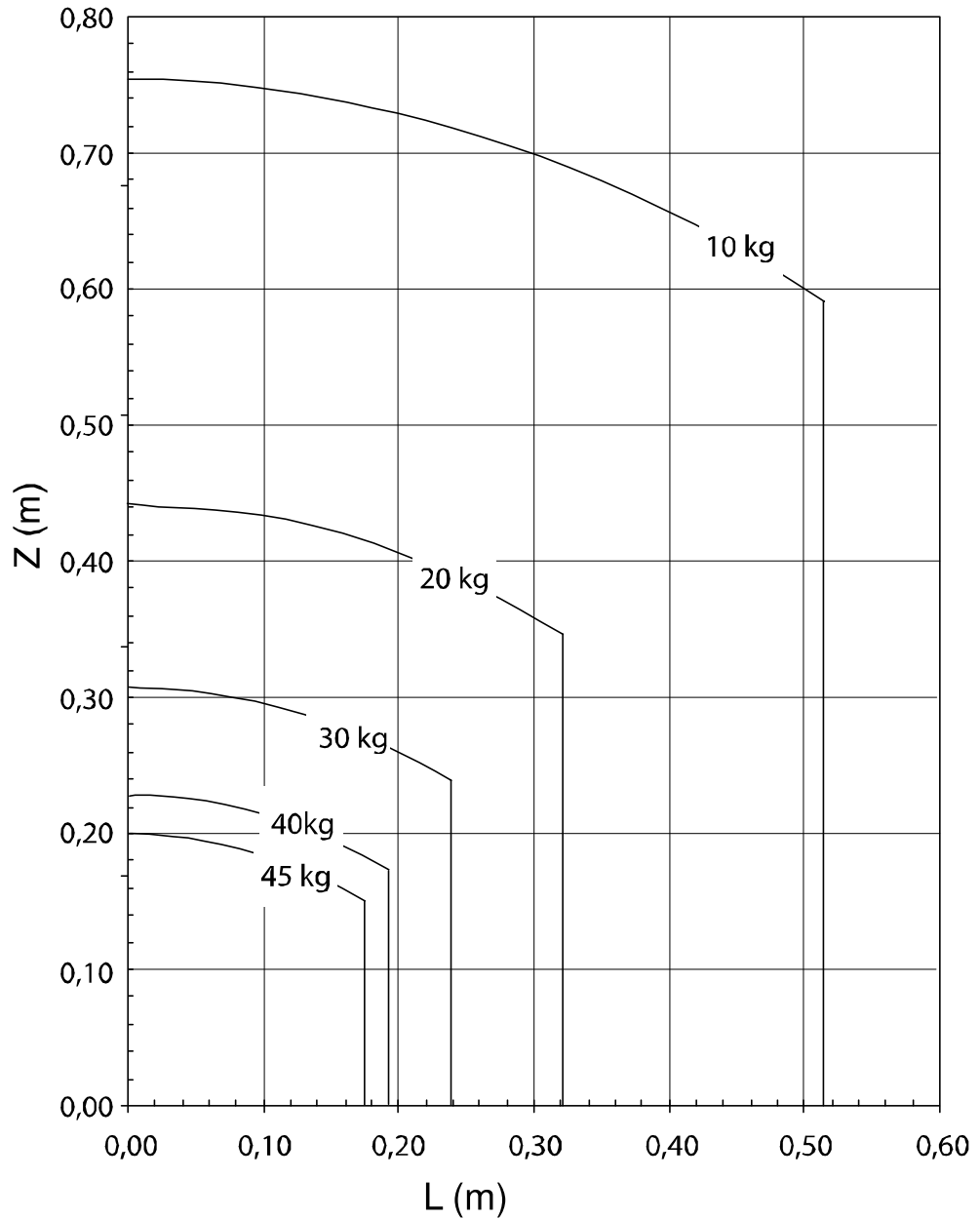
1.5.2 Load diagrams

Continued



武永康
13913235524
(微信同号)

IRB 4600 - 45/2.05



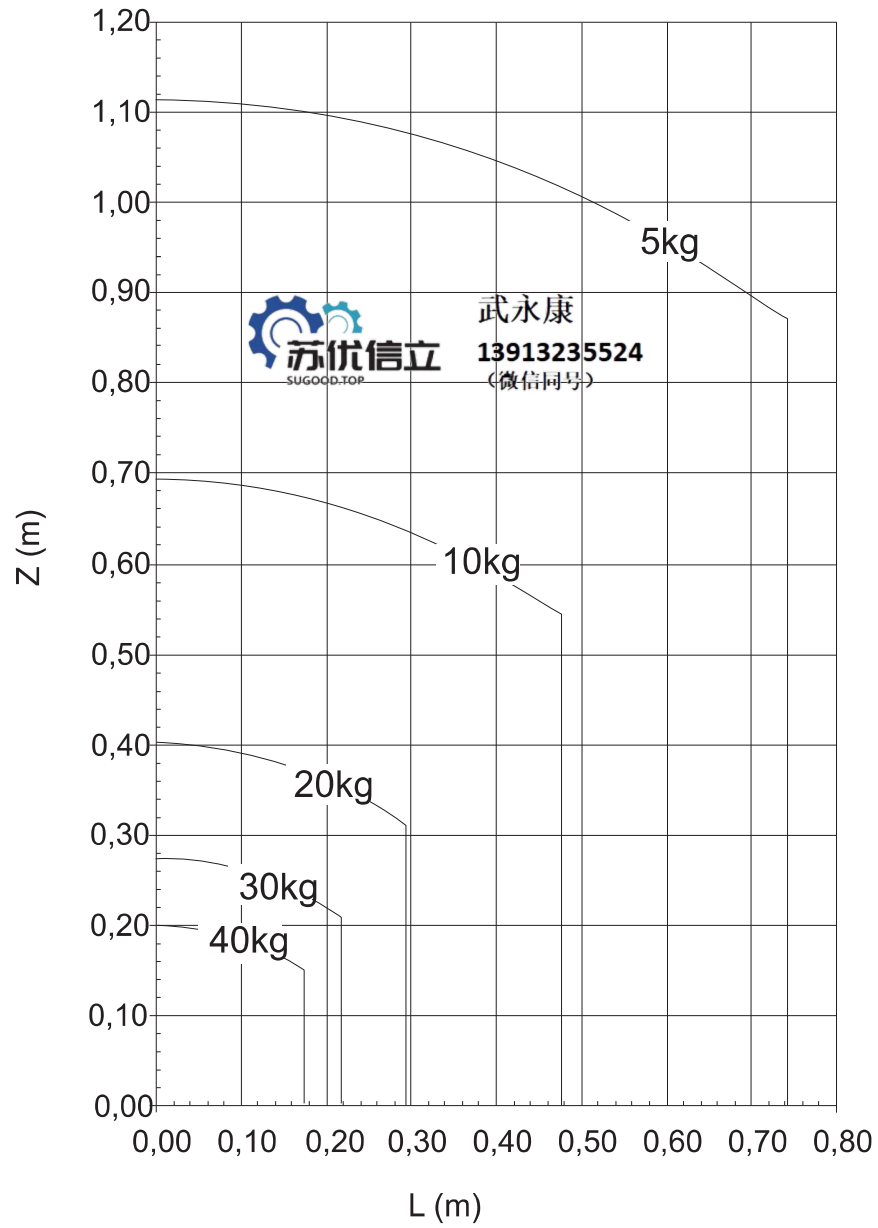
xx0900000069

Load diagram for "Vertical wrist" is not applicable for IRB 4600-45/2.05.

The above load diagram also valid for "Vertical wrist", no additional load allowed.

Continues on next page

IRB 4600 - 40/2.55



xx0800000447

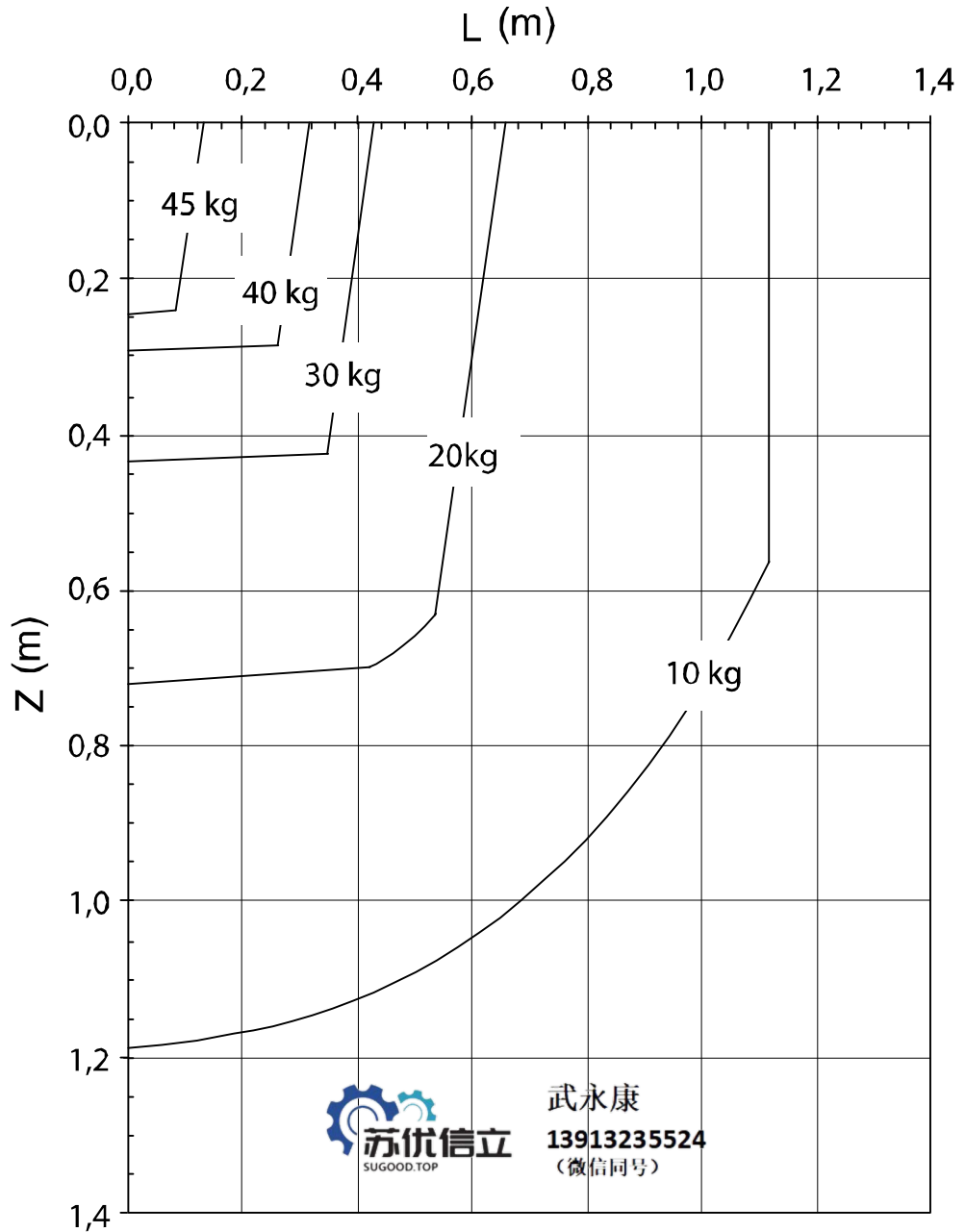
Continues on next page

1 Description

1.5.2 Load diagrams

Continued

IRB 4600 - 40/2.55 "Vertical wrist" (+-10)



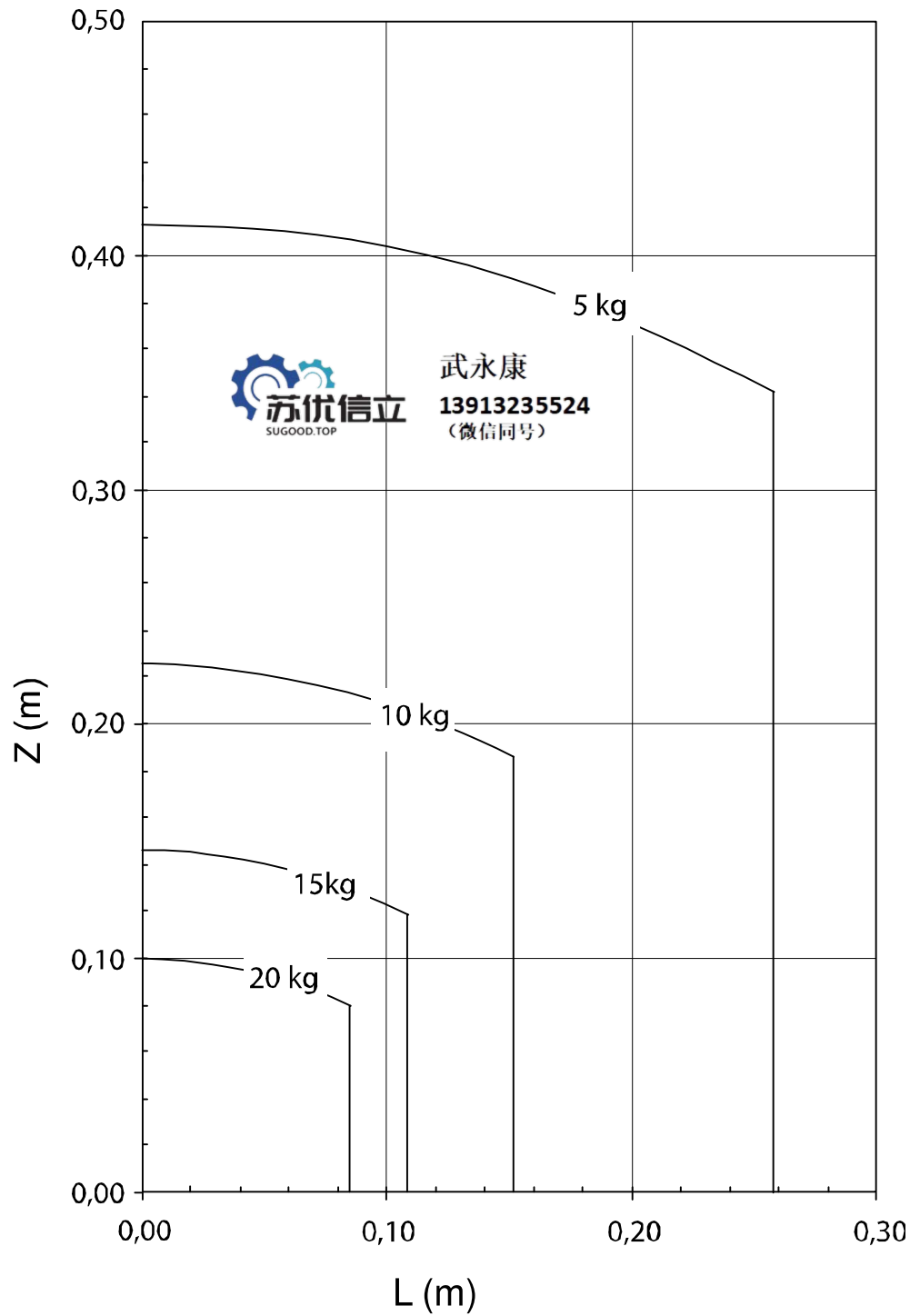
xx0900000068

For wrist down (0 deviation from the vertical line).

	Description
Max load	47 kg
Z _{max}	0,157 m
L _{max}	0,044 m

Continues on next page

IRB 4600 - 20/2.50



xx090000071

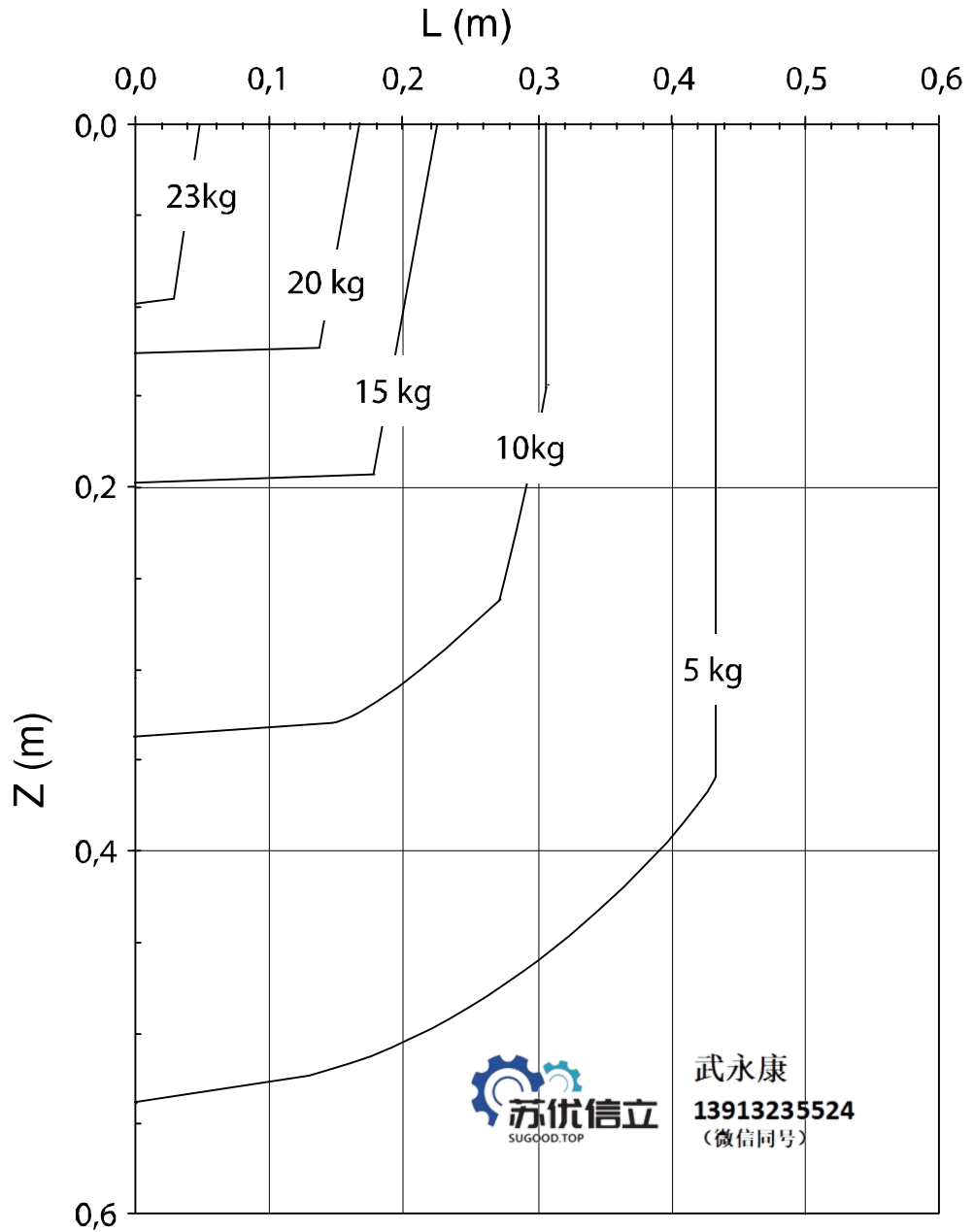
Continues on next page

1 Description

1.5.2 Load diagrams

Continued

IRB 4600 - 20/2.50 "Vertical wrist" (+-10)



xx0900000067

For wrist down (0 deviation from the vertical line).

	Description
Max load	23 kg
Z _{max}	0,1 m
L _{max}	0,06 m