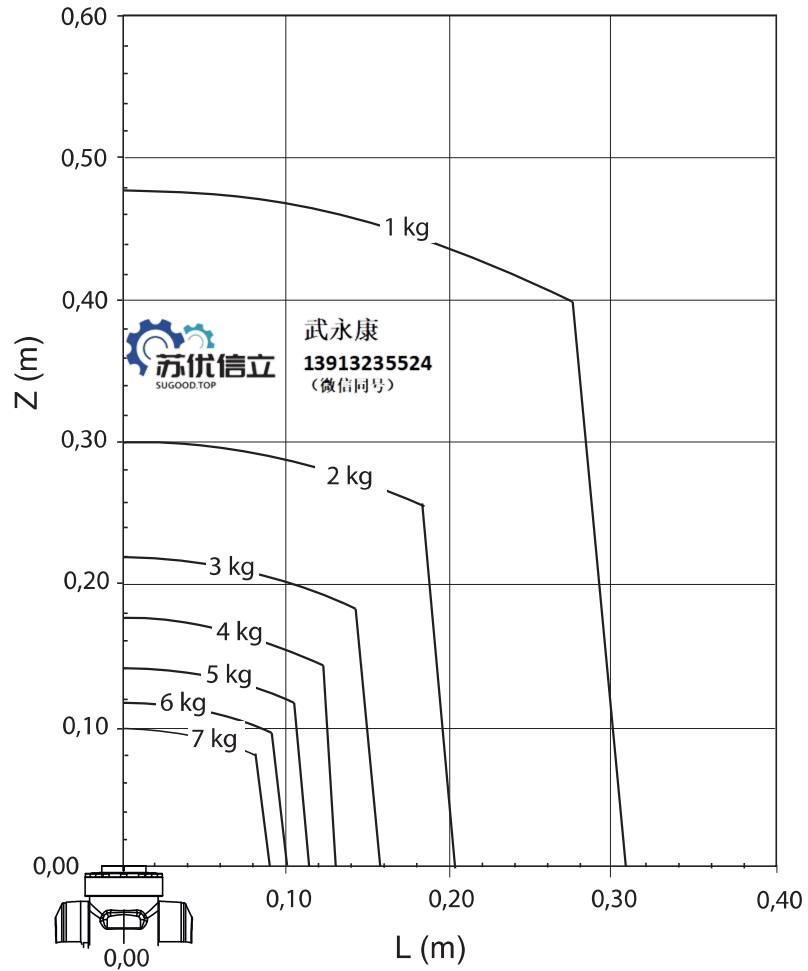


1.4.2 Load diagram

IRB 1200 - 7/0.7



xx130000371

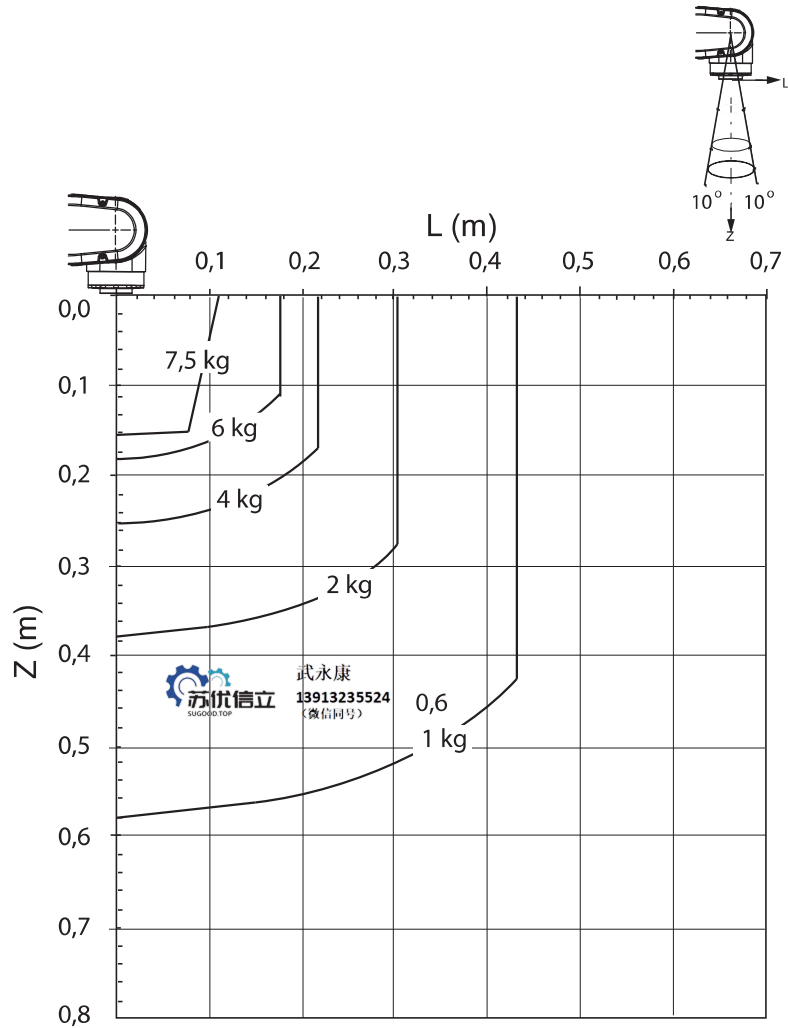
Continues on next page

1 Description

1.4.2 Load diagram

Continued

IRB 1200 - 7/0.7 "Vertical wrist" ($\pm 10^\circ$)



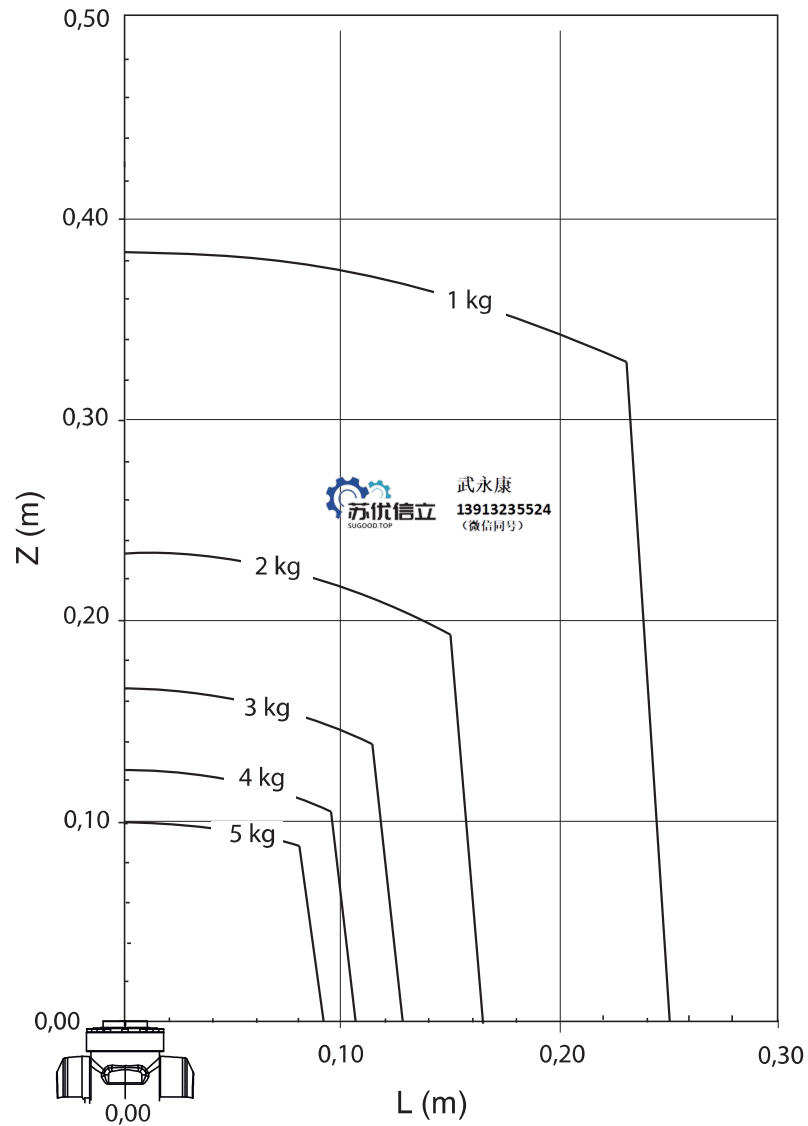
xx1300000372

For wrist down (0° deviation from the vertical line).

	Description
Max load	7.5 kg
Z_{\max}	0.159 m
L_{\max}	0.109 m

Continues on next page

IRB 1200 - 5/0.9



xx1300000369

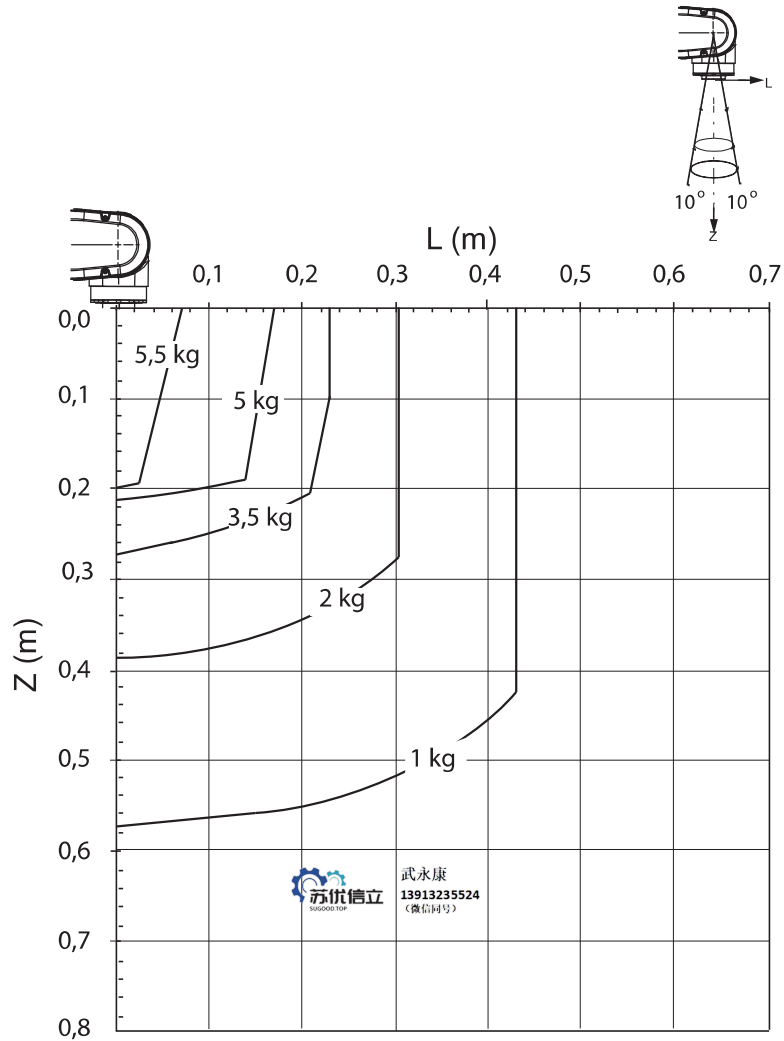
Continues on next page

1 Description

1.4.2 Load diagram

Continued

IRB 1200 - 5/0.9 "Vertical wrist" ($\pm 10^\circ$)



xx1300000370

For wrist down (0° deviation from the vertical line).

	Description
Max load	5.5 kg
Z _{max}	0.199 m
L _{max}	0.069 m